

# Cynomolgus HGF R/c-MET Protein

Cat. No. MET-CM101

## Description

<b>Source</b>	Recombinant Cynomolgus HGF R/c-MET Protein is expressed from HEK293 with His tag at the C-Terminus. It contains Glu25-Asn930.
<b>Accession</b>	A0A2K5UM36
<b>Molecular Weight</b>	The mature form of HGF R is a heterodimer which can be cleaved into $\alpha$ and $\beta$ chain. The protein has a predicted MW of 32.5 kDa ( $\alpha$ chain) and 69.9 kDa ( $\beta$ chain). Due to glycosylation, the protein migrates to 45-52 kDa ( $\alpha$ chain) and 75-82 kDa ( $\beta$ chain) based on Tris-Bis PAGE result.
<b>Endotoxin</b>	Less than 1EU per $\mu$ g by the LAL method.
<b>Purity</b>	> 95% as determined by Tris-Bis PAGE > 95% as determined by HPLC

## Formulation and Storage

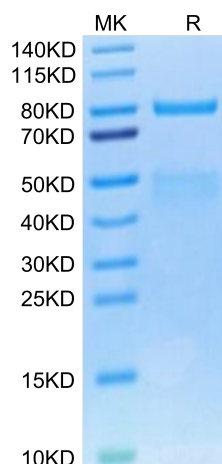
<b>Formulation</b>	Lyophilized from 0.22 $\mu$ m filtered solution in PBS (pH 7.2). Normally 8% trehalose is added as protectant before lyophilization.
<b>Reconstitution</b>	Centrifuge the tube before opening. Reconstituting to a concentration more than 100 $\mu$ g/ml is recommended. Dissolve the lyophilized protein in distilled water.
<b>Storage</b>	-20 to -80°C for 12 months as supplied from date of receipt. -20 to -80°C for 3-6 months in unopened state after reconstitution. 2-8°C for 2-7 days after reconstitution. Recommend to aliquot the protein into smaller quantities for optimal storage. Please minimize freeze-thaw cycles.

## Background

c-Met, also called tyrosine-protein kinase Met or hepatocyte growth factor receptor (HGFR), is a protein that in humans is encoded by the MET gene. The protein possesses tyrosine kinase activity. The primary single chain precursor protein is post-translationally cleaved to produce the alpha and beta subunits, which are disulfide linked to form the mature receptor. Following activation by ligand, interacts with the PI3-kinase subunit PIK3R1, PLCG1, SRC, GRB2, STAT3 or the adapter GAB1.

## Assay Data

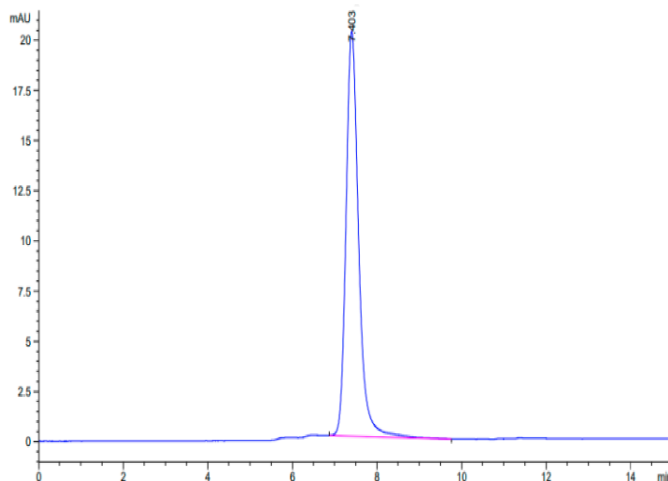
### Tris-Bis PAGE



Cynomolgus HGF R on Tris-Bis PAGE under reduced condition. The purity is greater than 95%.

### SEC-HPLC

Assay Data

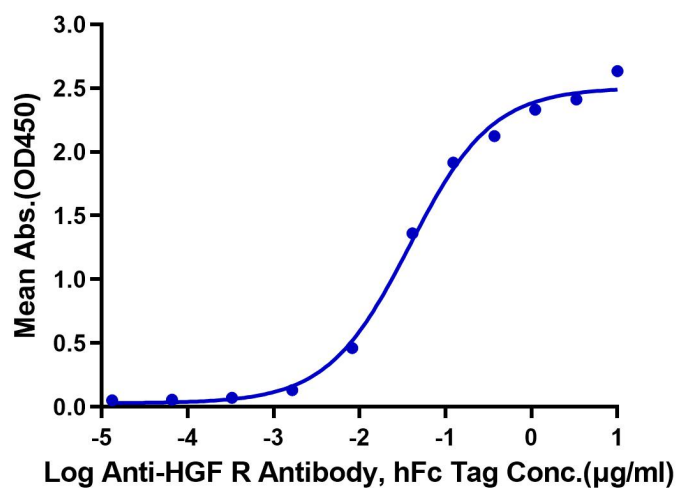


The purity of Cynomolgus HGF R is greater than 95% as determined by SEC-HPLC.

ELISA Data

**Cynomolgus HGF R, His Tag ELISA**

0.1µg Cynomolgus HGF R, His Tag Per Well



Immobilized Cynomolgus HGF R, His Tag at 1µg/ml (100µl/well) on the plate. Dose response curve for Anti-HGF R Antibody, hFc Tag with the EC50 of 38.4ng/ml determined by ELISA.